



LIGHT STEEL FRAME

www.shospec.co.za



MBA AWARDS
2011, 2012, 2013,
2015, 2016, 2017,
2018



SAISC / SASFA AWARDS
2013, 2015, 2016



AWARD OF EXCELLENCE
2012, 2013, 2015, 2018



South African Building
Interior Systems Association



AAAMSA Fenestration





11 Roger De Clerck Place
Mkondeni, PMB, RSA
P.O. Box 11037, Dorpspruit 3206
Tel: +27 (0)33-3860100
Email: admin@shospec.co.za
Website: www.shospec.co.za

1. Introduction to Light Steel Frame building & the Benefits
2. Department of Health – Hillside Wards – Re roofing, Pietermaritzburg
3. Doris Goodwin Hospital – Revamp of Existing TB wards.
4. DOH Townhill Office Park, PMB
5. St Apollinaris Hospital, New Nurses Accommodation & Doctors Flats – Creighton
6. Dabmar - Manufacturing Plant & Double Storey Office Block, Dundee
7. Dabmar – Photo's
8. Sumitomo Rubber, Ladysmith
9. NTT Audi New Showroom - East London
10. UKZN – Howard Campus, School of Engineering – Dining Hall, DBN
11. Artek 4 Architects - LSF office extension, DBN
12. Hyundai, LVE Construction – Gateway
13. Neil Woolridge Motorsport Workshop, Pietermaritzburg
14. Celrose - 3rd Floor To Existing Office Block, Tongaat
15. Massmart Warehouse, Pinetown

LIGHT STEEL FRAME BUILDING

Light steel frame building has been around for 50+ years but has only lately become available to the South African shores. Shospec entered into the Steel Frame market in 2009 and are certain that this is the way forward when it comes to building new structures. Light Steel Frame Building offers quality, cost efficiency and speed of erection for low-rise residential and non-residential buildings.

The LSF building method consists of sections of structural wall panels, with the optional addition of trusses, these are made from 0.8mm gauge, high strength galvanised steel coil. These are put together using rivets or self-tapping screws to form the structural wall and roof panels, which are erected on foundations and floor slabs. Once erected, the walls are cladded externally and internally, incorporating plumbing and electrical services.

Shospec are more than just your average building company, their innovative and efficient LSF building technique aids in bringing South Africa in line with international building trends and presents a viable and often, preferable construction method in an ever-evolving industry.



THE BENEFITS

- Non-combustible.
- Highest strength-to-weight ratio of any building material.
- Galvanized steel resists rust and corrosion.
- Bolts, screws resist wind and seismic stress better than nails.
- Does not deplete forests and is 100% recyclable.
- Walls designed to exceed government energy efficient standards.
- Improved product quality with vertical, true and straight surfaces.
- Outstanding design flexibility and Quality of finishes.
- Cleaner building site with less rubble to remove from site.
- Reduction in site supervision and labour.
- Multiple access holes in each stud significantly simplify wiring & plumbing.
- Up to 40% saving in construction time.

DEPT OF HEALTH – HILLSIDE WARDS – RE ROOFING , PMB.

SCOPE OF WORK:

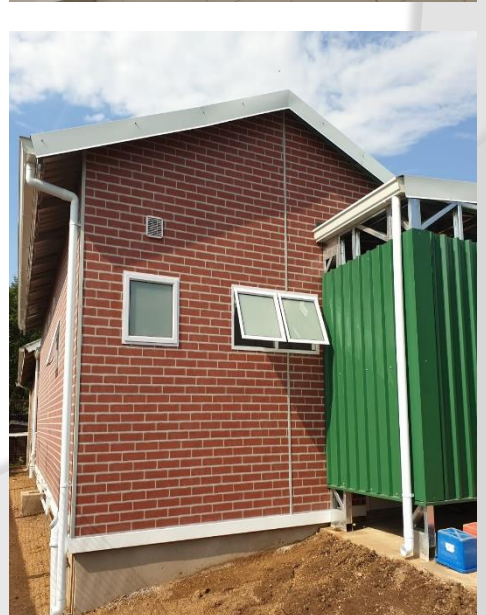
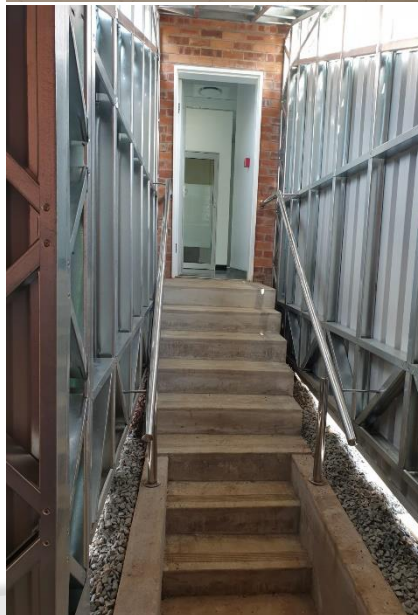
- Light Steel Frame Trusses and Roof sheets for Re-Roofing of the Townhill Hillside Wards.
- New ceiling and mesh barricade.



DORIS GOODWIN TUBERCULOSIS HOSPITAL- PMB.

SCOPE OF WORK:

- Revamp of Existing TB Wards for COVID 19 quarantine Wards.
- Ceilings and Partitions.
- Light steel frame ablution block for medical staff.



New Office Park Development, PMB.

SCOPE OF WORK:

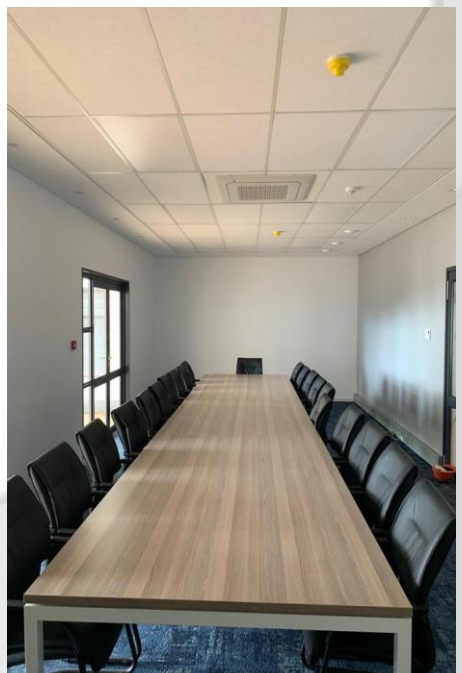
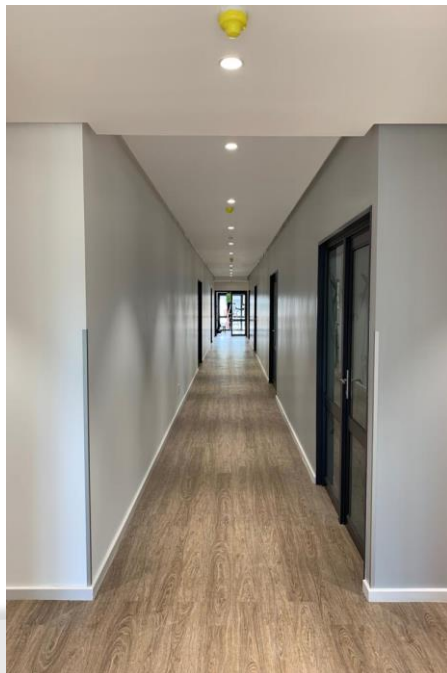
- 3 x LSF office blocks on office park
- Shospec, D Construction & SMS Design architects are a joint consortium, known as TOP JV.
- Contract period 19 months. (Design & Construction)

SIZE & VALUE

- 3600m² on a site that is 12500m².



New Office Park Development, PMB.



New Office Park Development, PMB. Exterior.



St Apollinaris Hospital, Creighton – November 2011

New Nurses Accommodation & Doctors Flats.

SCOPE OF WORK:

- Light steel frame top structure from slab.
- Wall cladding.
- Door and window openings and linings / reveals / frames.
- Complete roof structure excluding cladding.
- Ceiling and cornice.
- February 2011 – November 2011 - Extended contract April 2012.
- Shospec time on site \pm 6 months.

SIZE & VALUE:

- Total contract value \pm R42 000 000.00
- 3 x Nurses blocks, 650m² each (48 Staff).
- 1 x Doctors blocks, 550m² each (10 Staff).
- Total area of housing \pm 2500m².

CONCLUSION:

- Completed within programme.
- Excellent quality of finish.
- Winner of MBA Excellence in Construction Awards 2012 (Health Category Under R40mil)



- **MBA - EXCELLENCE IN CONSTRUCTION AWARD 2012 (HEALTH CATEGORY UNDER R40MIL)**

Quote from the Architect:

"Anything is possible. One only needs to educate the public on the merits of Light Steel Frame Building."

Dabmar – Manufacturing Plant & Double Storey Office Block, Dundee.

SCOPE OF WORK:

- Manufacturing Plant & Double Storey Office block
 1. External Cladding of Manufacturing Plant.
 2. Complete construction of LSF double story office block & entertainment deck.
- Shospec were the main contractor.
- Contract period:
 - Oct 2014 to Dec 2014 (Manufacturing plant cladding – 3 months)
 - Nov 2014 – Jun 2015 (Office Block – 7 months)

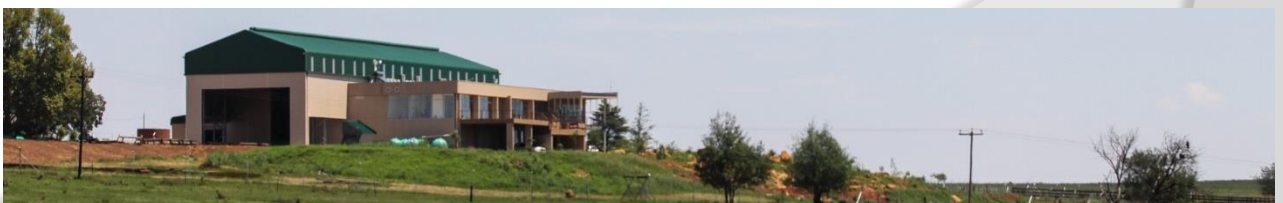
SIZE & VALUE:

1. 65m x 17m x 10m high Perimeter.
 2. Office block 1200m² over both floors.
 3. 230m² entertainment deck
- Contract Value ± R14 000 000.00



- **STEEL AWARDS 2016 – SAFINTRA FACTORY & WAREHOUSE CATEGORY COMMENDATION.**
- **MBA EXCELLENCE IN CONSTRUCTION AWARD 2016 – 1st PLACE UNDER THE COMMERCIAL BUILDING CATEGORY FOR WORK UNDER R50 MILLION.**

Dabmar Photo's.



Sumitomo Rubber, Ladysmith.

SCOPE OF WORK:

- Construct a 1st floor Office block on top of existing building roof slab.
- Complete construction of 1st floor in Light Steel Frame.
- Shospec are a sub-contractor for the LSF portion of the contract.
- Contract period 4 months.
- Feb 2015 to June 2015.

SIZE & VALUE:

- 600m² office block extension.
- Contract Value ± R2 000 000.00



- **MBA – EXCELLENCE IN CONSTRUCTION AWARD 2016 – 1st PLACE IN THE SUB CONTRACTORS CATOGORY.**

Audi East London – February 2013.

SCOPE OF WORK:

- Light Steel Frame curved walls & racked walls 70'±m (4.5 - 6.5m high).
- Bulkheads & light troughs.
- Slotted finn slat wall.
- Ceiling, cornice & metal pan ceilings.
- October 2012 - February 2013
- Time on site ±4 months.

SIZE & VALUE:

- Curved walls 4.5 to 6.5m high.
- Total floor area ± 2000m².
- ± R1 600 000.00

CONCLUSION:

- Completed within programme.
- High quality of finish.
- Extremely technical and detailed fit out.
- Master Builders Association - Excellence In Construction Award 2013 (Sub-Contractor & Service Provider)
- Southern African Institute of Steel Construction – Steel Awards 2013, Stewarts and Lloyds Light Steel Frame Category Winner.



- **SAISC WINNERS OF THE LIGHT STEEL FRAME CATEGORY IN THE 2013 STEEL AWARDS STEWARTS AND LLOYDS LIGHT STEEL FRAME CATEGORY WINNER.**
- **MBA - EXCELLENCE IN CONSTRUCTION AWARD 2013 (SUB-CONTRACTOR & SERVICE PROVIDER)**

Quote from the Judge (Peter Curr):

"It came through with flying colours demonstrating the unique attributes of LSFB. In this case instead of straight and square lines, we were treated to dramatic curves that illustrated the versatility of the product."

UKZN – HOWARD CAMPUS, SCHOOL OF ENGINEERING DINING HALL

SCOPE OF WORK:

- Constructed a new dining area using LSF Building method.
- Main Contractor – Go Plan Homes.
- This was a complex building design and our light steel frames had to accommodate large shopfronts.

SIZE & VALUE

- The building was approximately 210m².



ARTEK 4 ARCHITECTS, DURBAN.

SCOPE OF WORK:

- Created new office space by using a LSF Structure and a Mezzanine floor.
- The new office extension was added to an already existing brick building.
- This building is also uniquely cladded with timber and has OSB 18mm T&G ceiling.
- Steel & Cladding – 22 Oct. 2018 to 14 Dec 2018.
- Ceilings – 14th Jan 2019 – 15 Feb 2019 (with a one week stoppage in-between)

SIZE & VALUE

- The building is 79m² in size.



Hyundai Gateway – June 2014.

SCOPE OF WORK:

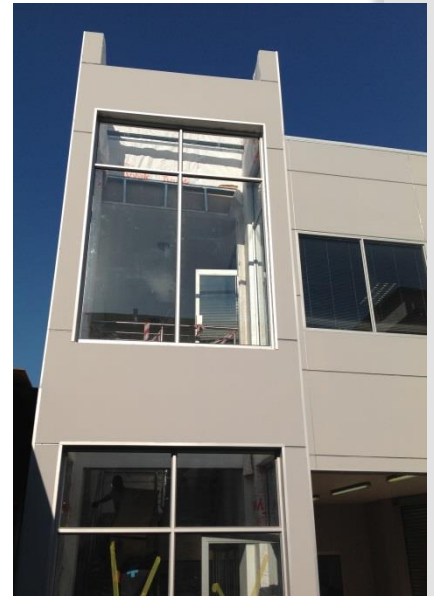
- Roof top extension for new office block, partly on existing roof slab and part light steel frame floor structure.
- Shospec was a subcontractor to LVE Construction, responsible for walls/floor and roof structure, all external and internal cladding.
- Contract period approx. 2.5 months.
- April 2014 – June 2014

SIZE & VALUE:

- 400m²
- Contract value ± R1 500 000.00.

CONCLUSION:

- Completed within programme.
- Architect and engineer impressed with system and product.
- Commented that they would definitely use this system in future projects.



Neil Woolridge Motorsport Workshop – October 2016.

SCOPE OF WORK:

- Adding first floor to existing building due to building burnt down.
- October 2016 to December 2016.
- Shospec are the main contractor.
- Contract period estimated 3 months.

SIZE & VALUE:

- - ± 272m²



- **MBA – EXCELLENCE IN CONSTRUCTION AWARD 2017 – HIGHLY COMMENDED IN THE SMALL WORKS CATEGORY .**

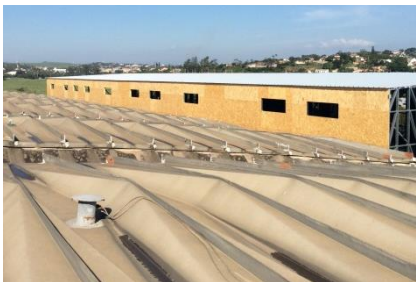
Celrose – 3rd Floor to existing office block , Tongaat.

SCOPE OF WORK:

- 3rd Floor on existing roof slab.
- Shospec are the full service main contractor.
- Contract period 4.5 months.
- Mid Feb – June 2015.

SIZE & VALUE:

- 650m² office block extension.
- Contract Value ± R3 600 000.00



Massmart Warehouse – February 2014.

SCOPE OF WORK:

- Freestanding 180'm Fire tunnel, side walls and roof for emergency evacuation to 40 000 m² warehouse.
- 12 x Fire doors for escape
- Time on Site 8 weeks
- Jan 2014 – Feb 2014

SIZE & VALUE:

- 180'm Passage
- Contract value ± 1 400 000.00.

