

T1 toilet partitions framed partition system



ceiling systems

partitioning systems

opening systems

flooring systems



Head Office / Durban
(031) 563 7307
Pietermaritzburg Branch
(033) 345 3701

For export and all other regions
contact our head office or
one of our distributors.

Distributors:

Zululand
Above All Ceiling & Partitioning Systems
(035) 751 1956
Northern KZN
SAIBA Industries (Pty)
(034) 375 6051/2
South Coast
Southgate Ceilings & Partitions
(039) 314 9021
East London & Border Area
Almex East London
(043) 736 6334
Port Elizabeth
Amalgamated
(041) 451 2846
Krugersdorp
Ceiling Dynamix
(011) 660 6584
Northriding, Johannesburg
C+T Ceilings & Partitions Warehouse
(011) 704 6224
Centurion, Pretoria
C+T Ceilings & Partitions warehouse
(012) 653 3531
Alrode, Johannesburg
Supertec Ceilings & Board
(011) 868 4901
Wynberg, Johannesburg
Supertec Ceilings & Board
(011) 440 3712
Hamilton, Bloemfontein
Smart Boards (Pty) Ltd
(051) 430 8123

Visit our website on www.pelican.co.za
Email info@pelican.co.za



creating environments

The T1 system is constructed from various substrates encased in natural anodized aluminium channels and combined with functional accessories making it an aesthetically pleasing and cost effective alternative to brick construction. The cubicles can be used in public facilities such as washrooms, ablutions and change rooms.

They are available in a wide range of panel patterns and colours which are complemented by the slim aluminium framing.

Flexible and adaptable to any toilet cubicle configuration the T1 System also caters for the requirements of the disabled making this partitioning solution the number one choice for many installations. The T1 System, although modular as standard, can be adapted to various custom configurations and requirements.

Features and Benefits:

- Economical and quick to install
- Neat and hygienic
- Laminated both sides
- Aluminium framed edging and receiving channels
- Standard ironmongery
- Variety of colours and shades in Mellawood or Formica
- Functional and reliable

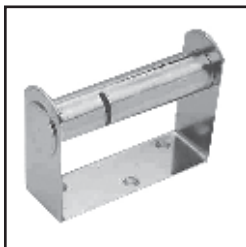
T1 Toilet Cubicle Construction

Infil Panels:

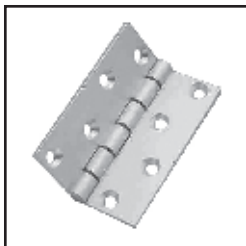
There are two aluminium frame channels available to cater for two different finished thicknesses;

A) Lipped Channel accommodates 16mm chipboard with either mellawood or melamine facing.

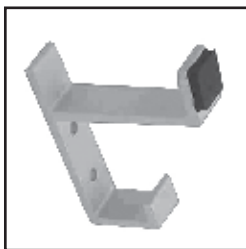
B) Un-lipped Channel accommodates 19mm formica clad chipboard. The formica clad chipboard is more durable of the two however it is more expensive.



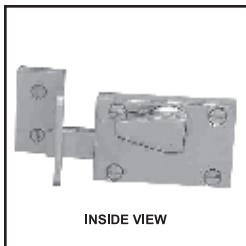
ANTI-THEFT TOILET ROLL HOLDER



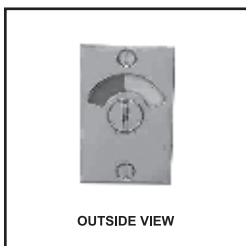
ALUMINIUM HINGE WITH
NYLON BRUSHES



HAT AND COAT HOOK WITH
RUBBER BUFFER



INSIDE VIEW



OUTSIDE VIEW

SATIN CHROME INDICATOR BOLT
AND SPECIAL KEEP

Framing:

Intermediate and end partitions, doors and pilasters are neatly framed in 22 x 22mm aluminium lipped channel and mitred at corners.

Skirting :

44mm high aluminium skirtings are formed at the base of pilasters by fixing 22 x 22mm inverted channel to the floor before fixing the pilaster in position, this minimises possible water contact with the base of the pilaster.

Transom:

The system is stabilised with the 25mm square aluminium transom.

Junction at Walls:

In order to prevent gaps between uneven tiles, walls and the system, partitions and pilasters are fixed to the walls as follows:

A 26 x 24mm (22 x 22mm I.D.) full height aluminium receiving channel section is fixed vertically to the tiles or plastered brick wall. The intermediate or end partition/ pilaster – all complete with aluminium lipped channel surrounds (22 x 22mm O.D.) are then slotted into the full height receiving channel and fixed plumb.

Ironmongery to Doors:

Each door is supplied with a pair of satin finished hinges, indicator bolt and keep and hat and coat hook with rubber buffer which serves as a door stop. The pilaster frame against which the door strikes is fitted with two rubber buffers to prevent unnecessary metal on metal striking noise.

Ironmongery to Partitions:

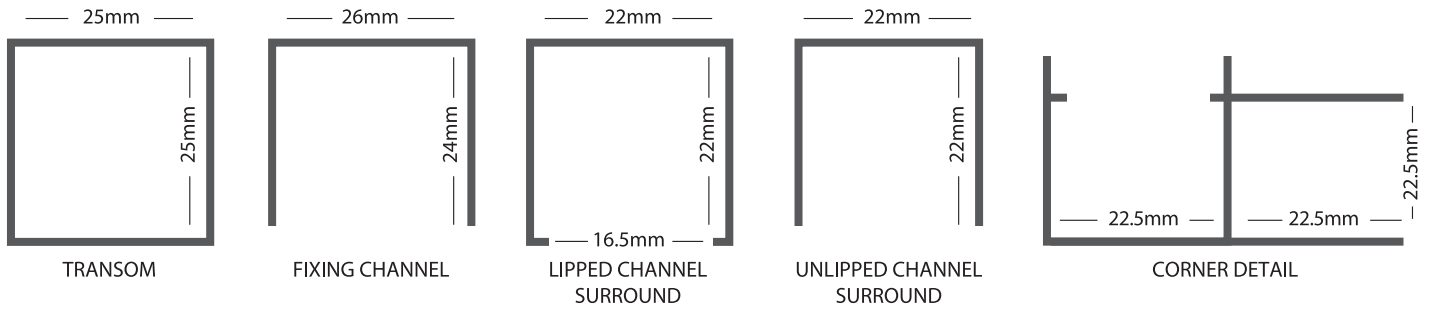
Intermediate and end partitions are supplied with toilet roll holders.

Cleaning Space:

The intermediate and end partitions are fixed 151mm above the finished floor level to allow easy cleaning.

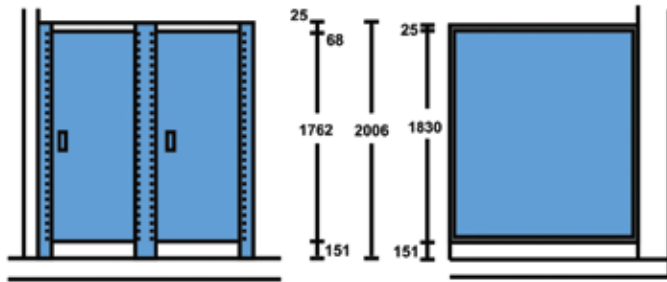
Non standard sizes can be made to measure, and door openings can be adapted for wheelchairs etc.

ALUMINIUM CHANNELS

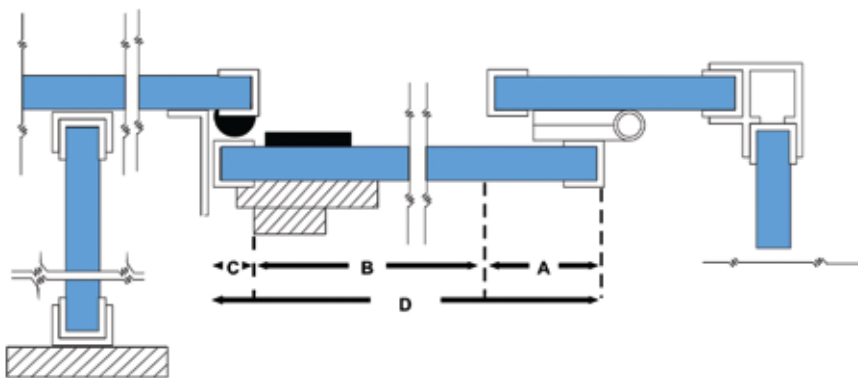
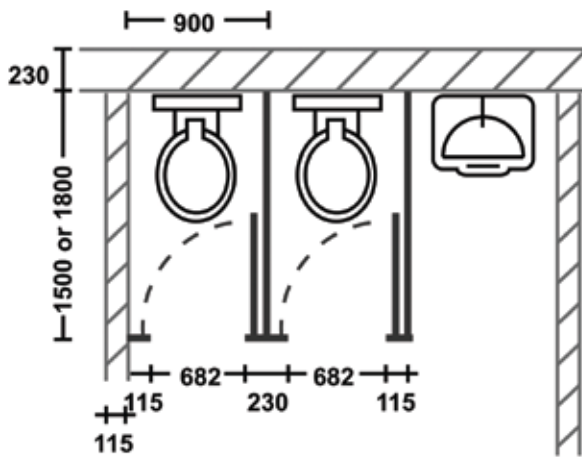


FRONT ELEVATION

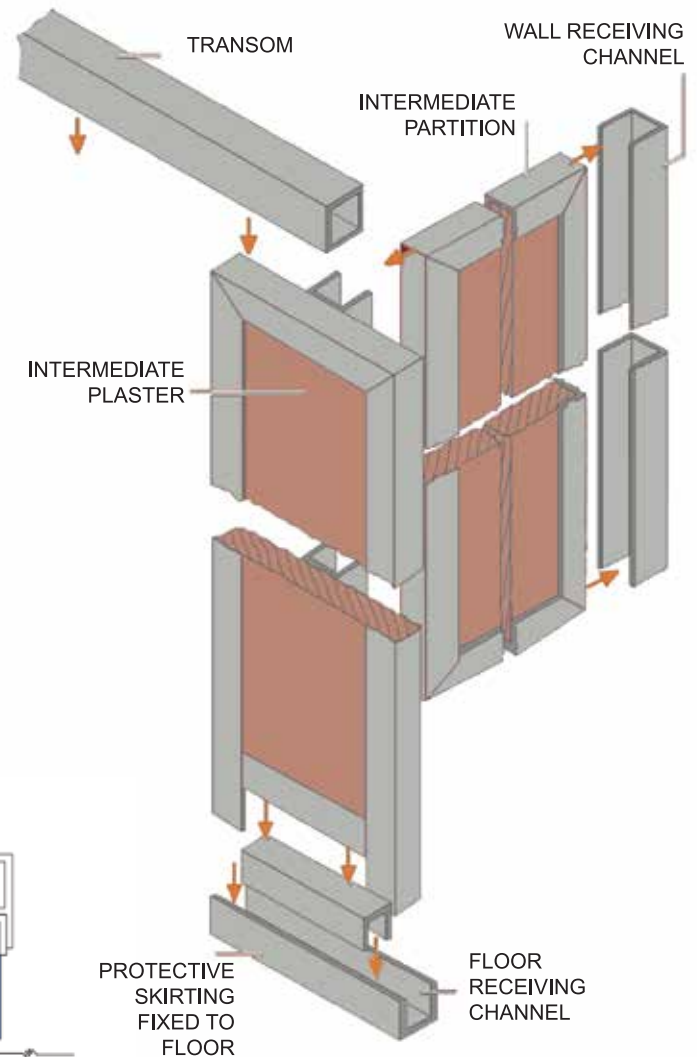
END ELEVATION



PLAN



D = DOOR SIZE
A = 58mm (HINGE OVERLAP)
C = 22mm (CLOSING OVERLAP)
B = DOOR OPENING
D = B (VARIES) + A (58 mm) + C (22mm)



Bill of quantity specification:

Supply and install Pelican Systems T1 Toilet Partition System comprising of 16mm thick particle board panels, laminated both sides with Melawood or Formica (specify colour), edged all round with 22 x 22mm lipped channel and fixed into position by means of full height vertical aluminium receiving channels fixed to the abutting wall, floor or pilaster. Pilasters and end partitions are stabilized by a continuous 25 x 25mm aluminium transom section over doors and supplied with a complete set of standard ironmongery comprising of indicator bolts, hat and coat hooks, door stops, toilet roll holders and rubber buffers. Aluminium surrounds, receiving channels and transom sections shall be (specify colour – natural anodised / colour anodised / colour powder coated).

*Note: Size variations are accommodated by adjusting the width of the doors

T2 toilet partitions

frameless partition system



ceiling systems

partitioning systems

opening systems

flooring systems



Head Office / Durban
(031) 563 7307
Pietermaritzburg Branch
(033) 345 3701

For export and all other regions
contact our head office or
one of our distributors.

Distributors:

Zululand
Above All Ceiling & Partitioning Systems
(035) 751 1956
Northern KZN
SAIBA Industries (Pty)
(034) 375 6051/2
South Coast
Southgate Ceilings & Partitions
(039) 314 9021
East London & Border Area
Almex East London
(043) 736 6334
Port Elizabeth
Amalgamated
(041) 451 2846
Krugersdorp
Ceiling Dynamix
(011) 660 6584
Northriding, Johannesburg
C+T Ceilings & Partitions Warehouse
(011) 704 6224
Centurion, Pretoria
C+T Ceilings & Partitions warehouse
(012) 653 3531
Alrode, Johannesburg
Supertec Ceilings & Board
(011) 868 4901
Wynberg, Johannesburg
Supertec Ceilings & Board
(011) 440 3712
Hamilton, Bloemfontein
Smart Boards (Pty) Ltd
(051) 430 8123

Visit our website on www.pelican.co.za
Email info@pelican.co.za



creating environments

The design and functionality of the T2 Toilet Partition System was inspired by the need for an upmarket, durable yet vandal resistant toilet partition system that can be used in a variety of public facility applications such as washroom cubicles, ablution cubicles and change room cubicles.

The T2 system is a frameless panel system constructed with 12mm high pressure laminate board. The product is superior in quality and is targeted at the high end of the market but still remains a cost efficient solution.

T2 is ideal for use in Shopping Malls, Stadiums, Hotels, Conference Facilities and Educational Institutions

Features and Benefits:

- Neat and hygienic
- Double sided facings which are water resistant
- Frameless with superior aesthetics
- Stylish stainless steel ironmongery
- Variety of colours options available including woodgrains
- Low maintenance and user friendly system
- Vandal resistant and rodent proof
- Height adjustable feet system

Innovative Design and Superior Aesthetics



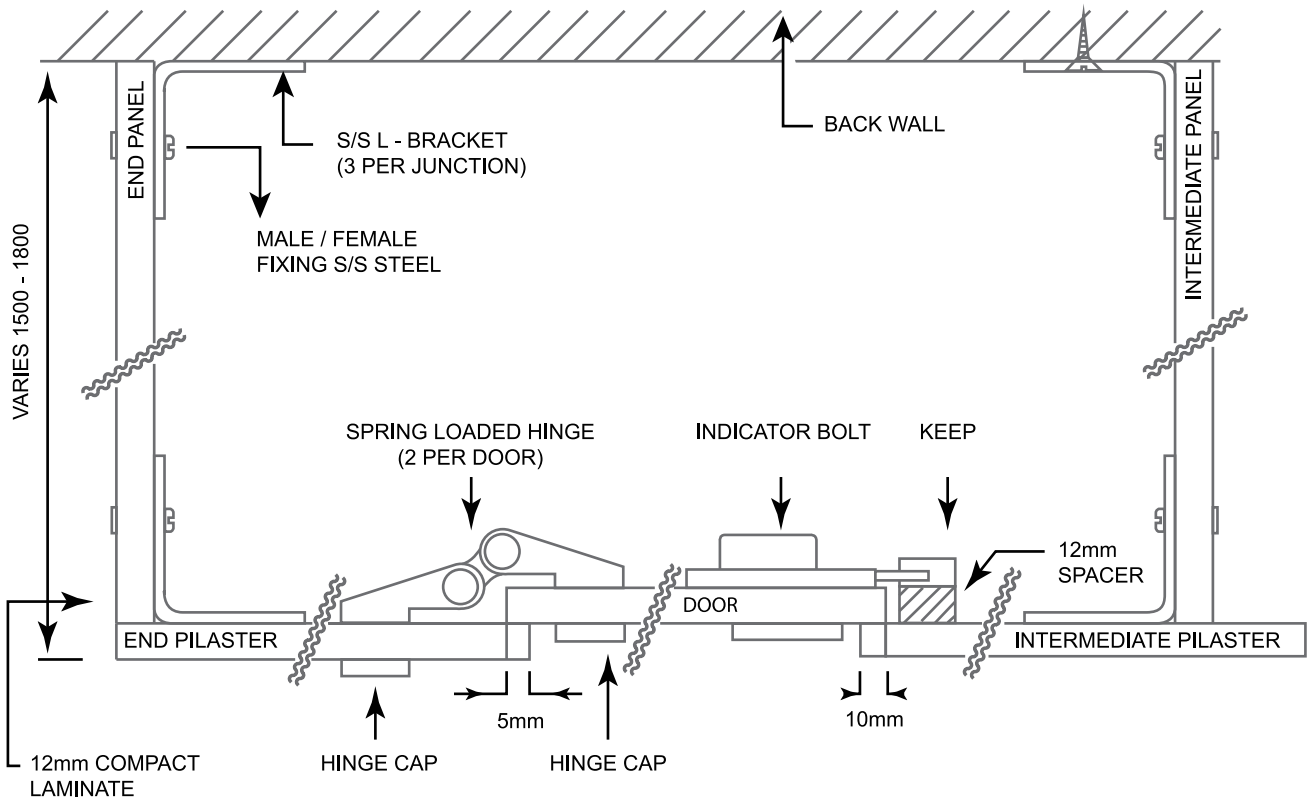
1. Indicator lock back
2. Indicator lock surface
3. Corner fastener
4. Hinge
5. Clothes hook
6. Adjustable leg

Bill of quantity specification:

Supply and install Pelican Systems T2 Toilet Partition System comprising of 12mm thick Compact HPL panels (specify finish), supported by overhead bracing with grade 304 stainless steel supporting feet, plugged and screwed to floor and fixed into position by means of grade 304 stainless steel wall fixing brackets plugged and screwed to walls.

Partition doors: 762 x 1762mm high doors including standard ironmongery comprising of indicator bolts, hat and coat hooks, door stops, toilet roll holders and buffers.

T2 PLAN SHOWING FIXING DETAIL



T2 FRONT ELEVATION

